



# IHBT

Ultimate destination for research on Bioresources

Biodiversity survey mapping & conservation

Chemical characterizaion and value addition

Plant genomics, proteomics & metabolomics

Microbial bioprospection

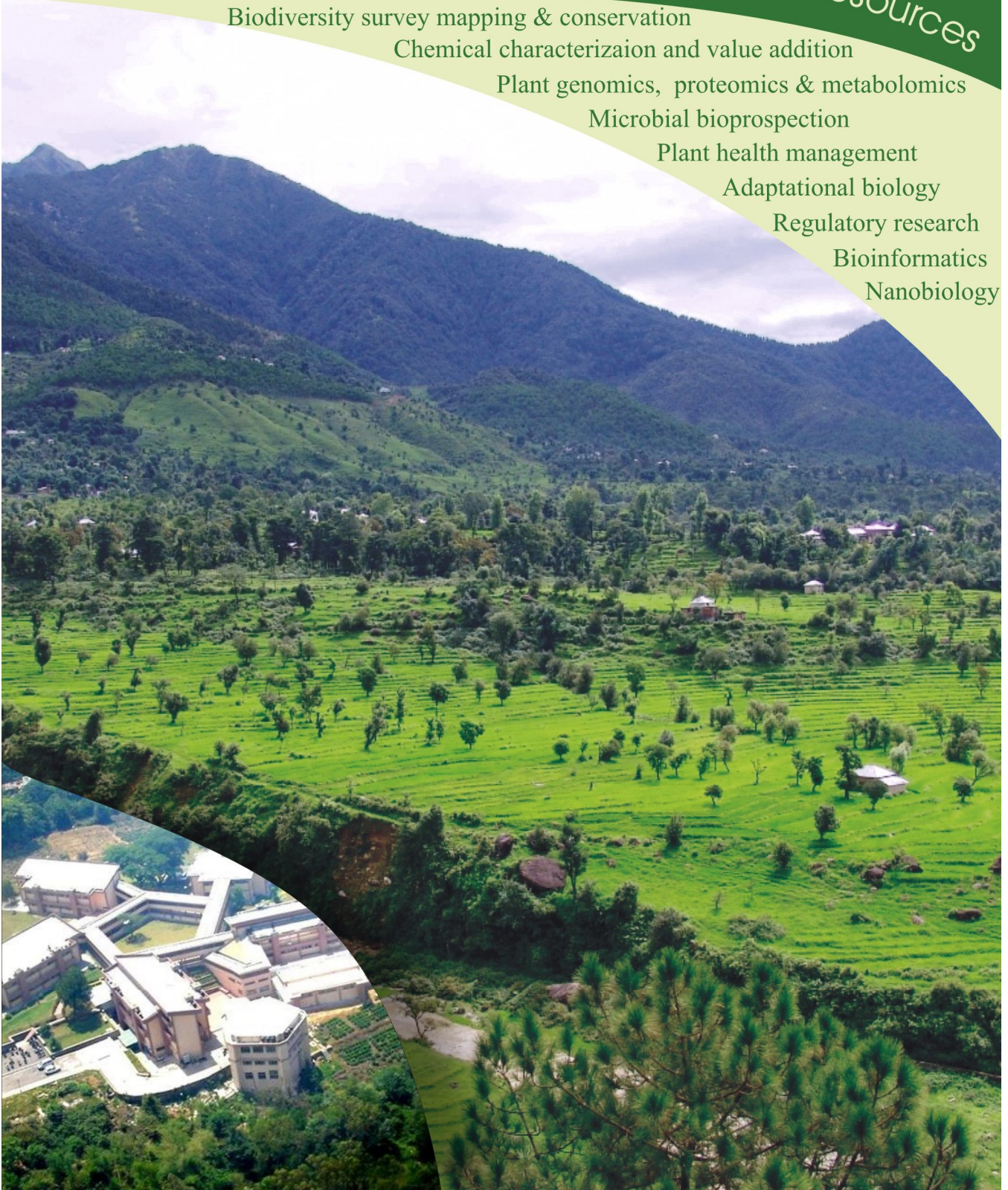
Plant health management

Adaptational biology

Regulatory research

Bioinformatics

Nanobiology

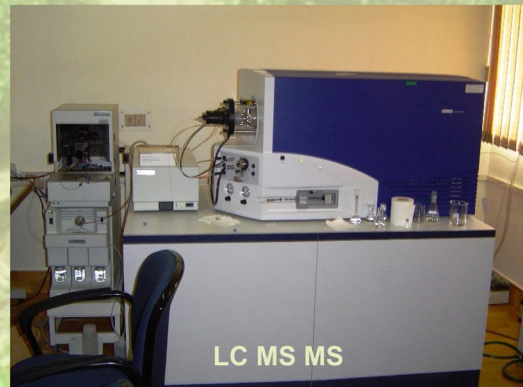




SOLEXA



CONFOCAL MICROSCOPE



LC MS MS



MALDI ToF



TISSUE CULTURE AND TRANSGENICS



R

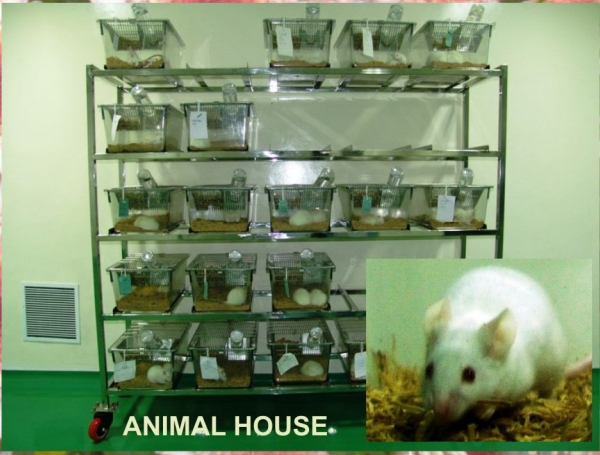
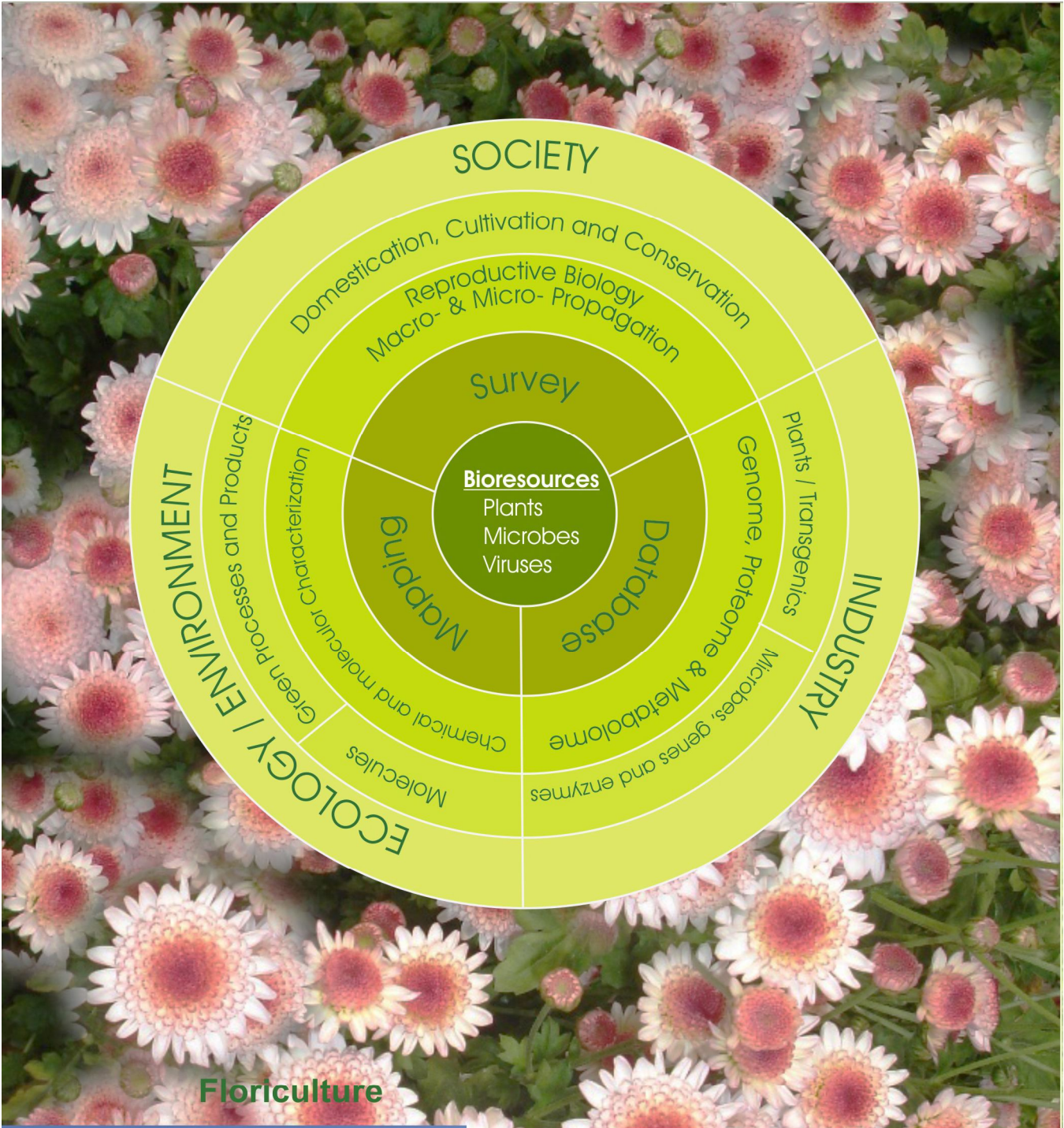
## MISSION

Providing R&D services on economic bioresources in western Himalayan region leading to value added plants, products and processes for industrial, societal and environmental benefit

## RECOGNITIONS

- National facility for virus indexing of ornamental plants
- Regulatory research facility
- Centre of excellence in bamboo
- Internationally recognized herbarium (acronymed as PLP);

**Stevia**



## SERVICES

- Consultancy and contract research
- Cultivation and processing of MAPs, tea, bamboo and floriculture
- Turnkey process technology ventures
- Analytical services: essential oils, bioactive constituents, pesticide residues, heavy metals and microbial load in herbals
- Databases- Himfloris, TRAMPIS, and TRAMFIS
- Herbarium
- Plant virus testing
- Information and knowledge management
- HRD

For patents and publications  
visit  
[www.ihbt.res.in](http://www.ihbt.res.in)

Tea Garden



PILOT PLANTS



TEM



FACE



NMR

## IHBT caters to

### Food/Nutraceuticals:

Tea concentrates, tea wine, steviol glycosides, flavours, dietary fiber, bamboo candies, antioxidants and SOD

### Fragrances/Flavours/Essential oils/Health:

Aescin, dihydrotagetone, beta-asarone, bioactive molecules, natural vanillin, natural colours and dyes

### Biotech:

Genes, recombinant enzymes, RNA isolation solution *iRIS*<sup>TM</sup>, tissue culture protocols of bamboo, rose, stevia, saffron, orchids, tea, lilies, apples, potatoes, etc.

### Inventions:

Tea withering machine, tea plucking machine, mini laminar flow STERIFLOW<sup>TM</sup>, gel transfer device GEPROTED<sup>TM</sup>, rooting vessel, and mini distillation unit HERBOSTILL<sup>TM</sup>

### Farmers:

Varieties - Damask rose, Gladiolus, Tagetes, *Valeriana jatamansi*, *Curcuma aromatica*, *Hedychium spicatum*, elite rose root stocks, edible bamboos, ornamentals, medicinal & aromatic plants, biofertilizers, biocontrol agents, biopesticides and viral diagnostic kits.



Bamboo candies



Dietary fiber



Natural colours





Mobile Distillation Unit

## IHBT's REPOSITORIES

- Flora:**  
Arboretum, Bambusetum, Fernery,  
Medicinal, Aromatic and Dye plants,  
Orchids, Floriculture crops, Stevia, Tea, etc.
- Microbes**
- Molecules**
- Genes**



Bamboo Museum



**CSIR-INSTITUTE OF HIMALAYAN BIORESOURCE TECHNOLOGY**

Palampur, Post Box No. 6, Himachal Pradesh- 176 061, India

[www.ihbt.res.in](http://www.ihbt.res.in)

ISO 9001: 2008 and NABL accredited labs

September 2011